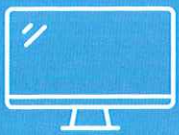




来华留学生保险

# Online payment Instruction.

## 网上支付看这里 轻松缴费我帮你



PC端  
PC terminal

### Step. 1

登录留学保险网  
Login to lxbx.net

www.lxbx.net



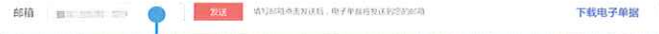
### Step. 2

输入护照号和验证码  
Passport number  
and verification code



### Step.5

支付完成  
Payment completed



邮箱留存凭证  
Send purchase receipt

### Step.4

支付方式  
Payment method



在线帮助  
Online help

境外卡支付:多语言支持  
International credit cards  
with multilanguage support

### Step.3

购买保险  
Buy Insurance

购买保险

点击购买  
Click to purchase



选择保费  
Choose Insurance  
package

新护照号  
Input new passport  
number here



联华国际  
Unichina International

服务支持热线  
Customer Service

400-810-5119





来华留学生保险

# Online payment Instruction.

## 网上支付看这里 轻松缴费我帮你



手机端

Mobile terminal

## Step.1

扫描二维码  
Scan the QR Code



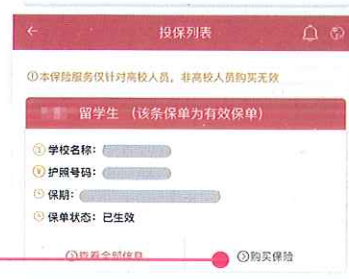
## Step.2

输入护照号和验证码  
Passport number  
and verification code

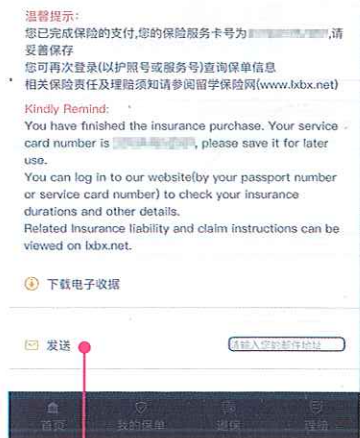


## Step.3

点击购买  
Click to purchase



## Step.5



邮箱留存凭证

Send purchase receipt

我已阅读并确认保险保障内容及免除责任

请阅读勾选  
By checking this box,  
I acknowledge all the conditions

下一步

点击下一步  
Clicking to continue

保险期间为...到...，是否购买？

否 是

确认保险期限  
Confirm the insurance period  
to purchase

## Step.4

选择保费  
Choose Insurance package



服务支持热线  
Customer Service

400-810-5119





理赔查询请关注

# 理赔申请流程

按要求备齐下列资料 → 邮寄到保险公司

申请项目 \ 所需材料	护照复印件及签证页复印件	医院发票原件	病历复印件（每次就诊病历日期与发票日期相对应）	费用明细	意外事故证明	出院小结或住院病历复印件	银行存折复印件或银行卡客户信息表
意外门诊	需要	需要	需要		需要		需要
疾病门诊	需要	需要	需要				需要
住院（因意外）	需要	需要		需要	需要	需要	需要
住院（因疾病）	需要	需要		需要		需要	需要

注意事项：

- 1、就诊前务必拨打电话4008105119进行寻诊；
- 2、意外事故须提供意外事故证明及相关部门的定性材料（如：交通事故须出具交通部门的交通事故责任认定书等）；
- 3、银行账户信息必需包括账号、帐户名和开户行信息。

理赔材料寄送地址：北京市西城区金融大街23号平安大厦9层（邮编100033）。

收件人：留学保险项目组

电话：4008105119



## How to apply for claim?

Firstly, you should prepare the following documents as required. Then, please send the documents you have prepared to us.

Documents for Claims	Copy of passport and visa page	Original of receipt	Medical record (the date in every medical record should be corresponding to the date in every receipt)	Original of detailed expenditure sheet	Course and certificate of accident	Copy of hospital discharge summary or medical record of hospitalization	Copy of passbook or information sheet of bank card customer
Insurance							
Liabilities							
Outpatient (because of accident)	Needful	Needful	Needful		Needful		Needful
Outpatient (because of disease)	Needful	Needful	Needful				Needful
Hospitalization (because of accident)	Needful	Needful		Needful	Needful	Needful	Needful
Hospitalization (because of disease)	Needful	Needful		Needful		Needful	Needful

Please pay attention to the following matters:

1. Before seeing a doctor, please call 4008105119 for medical consultation.
2. Certificate of accident, in case of a traffic accident, please submit a liability conformation of traffic accident issued by the traffic unit. And if other accidents happen, please also submit relative certification materials.
3. The information about bank account has to include account number, account name and name of the deposit bank.

Materials for claims of settlement sent to :

北京市西城区金融大街23号平安大厦9层 ( 邮编100033 )

Addressee: 留学保险项目组 Please Dial:4008105119

